



LEVELWEAR



2026 SPRING

CORPORATE
COLLECTION

A warm **welcome** from **LEVELWEAR!**

From our early days since 1987, we've always understood that the true strength of our brand lies in the people behind it and the quality of the products we create. Our purpose has never been just about clothing; it's about bringing people together in community to celebrate shared victories. We are for people who believe that no one wins alone.

Driven by our passion for sports and performance, every Levelwear product is designed and crafted to the highest standards. From in-house modern design and innovative fabrications to meticulously executed, state-of-the-art branding, each piece from Levelwear is more than just clothing—it's a symbol of teamwork and unity, embodying the spirit of **Who's with you?**

From our team to yours, we invite you to join the Levelwear family. Together, let's celebrate every victory, big or small, and remember that we are always stronger together. Here's to new beginnings and endless possibilities!



SPECKLE
MEN'S / WOMEN'S
Ice 2

Table of Contents

Levelwear 2026 Spring Corporate Collection

- Levelwear Fabric Innovations 04
- Matchable Polos..... 05
- Men’s Polos..... 13
- Women’s Polos 16
- Matchable Active-Midlayers17
- Men’s Active-Midlayers.....31
- Matchable Outerwear 29
- Men’s Casuals37
- Matchable Casuals..... 39
- Luxe Collection47
- Verve..... 49
- Headwear51
- Towel 60
- Signature Applications61
- Apparel Treatment..... 63
- Headwear Treatment 64
- Corporate Offshore
- Treatment Summary..... 65
- Fitting Chart..... 66
- Terms & Conditions 66



Recycled / Polyester/Spandex



Sustainability in Action

We prioritize caring for our planet. At Levelwear, we are committed to a responsible, ethical, and sustainable way of doing business that respects both people and the planet.

Bold Designs with Purpose

Our 2025 collection showcases vibrant colors and modern styles, blending bold fashion with environmental responsibility. Designed for durability and comfort, our recycled apparel collection transforms PET plastic bottles into premium polyester fabrics, offering eco-conscious style without compromising quality or performance.

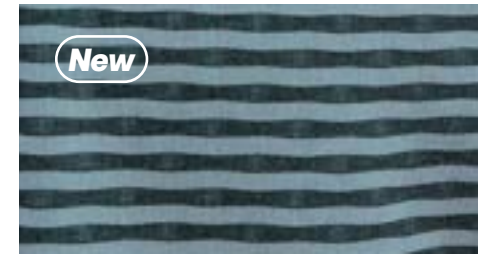
Responsible Sourcing with Certified Partners

We collaborate with fabric mills and factories that meet our stringent standards for quality, environmental sustainability, and ethical labor practices. Our partners hold various internationally recognized certifications ensuring they adhere to industry-leading practices.

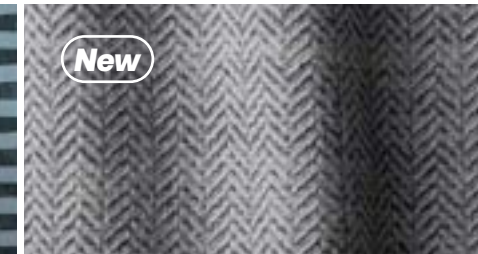


ORIGINAL MEN'S
White, Ice 2, Mauve Pink, Blue Heaven,

Fabric Innovations



Gale Fabric - Our premium yarn-dye stripe polo - crafted with a rich 3D textured knit that brings both dimension and distinction. The perfect fusion of subtle sophistication and technical performance.



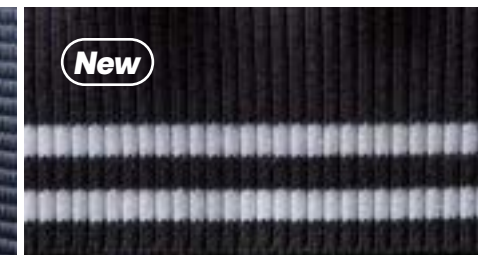
Herringbone - Our new soft herringbone is a distinctive woven pattern resembling the bones of a herring fish. It features a zigzag or V-shaped design, created by alternating the direction of weave. While traditionally made from wool or cotton, our new modern Polyester, Nylon Spandex blend is a higher-performance fabric but soft and comfortable to the touch.



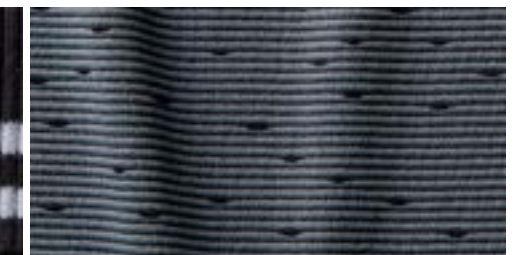
Motion Grid - Our Recycled Poly Spandex fabric combines the best of sustainability and functionality to redefine your activewear experience. Crafted with care from recycled polyester fibers blended with stretchy spandex, this fabric offers exceptional comfort, durability, and performance without compromising on eco-conscious values.



Ottoman - This fabric features a tightly woven structure with subtle horizontal ribs or corded lines, offering a stylish and tactile dimension. The ribbed weave not only enhances its visual depth but also contributes to its strength and resilience, making it ideal for high-performance or lifestyle applications.



Sweater Knit - Sweater knit features intricate, woven patterns that showcase the brand's design, creating a textured, high-quality fabric that combines style and comfort. 100% Cotton provides comfort and versatility.



Breeze Fabric - Introducing our latest innovation in fabric technology - Polyester Textured Breeze Fabric, designed to redefine your wardrobe experience with unparalleled lightweight textured comfort. Crafted with meticulous attention to detail, this fabric blends the breathability of a lighter weight fabric for maximum comfort.



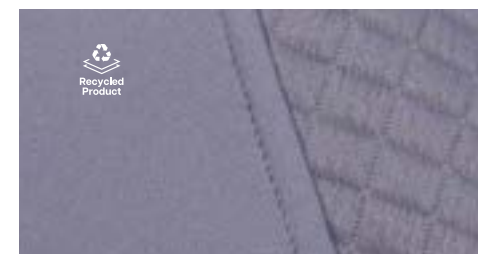
Cotton Tri Blend - Soft cotton modal spandex fabric blends the breathability of cotton, the silky smoothness of modal, and the stretch of spandex for a comfortable, flexible, and luxurious feel.



Cushion Fabric - Our Soft Polyester Cushion Fabric offers plush comfort with lasting durability. Ideal for a warmer midlayer that combines luxurious softness with everyday resilience.



Jacquard Fabric - Polyester jacquard polo fabric features a durable, textured weave with intricate patterns, offering a stylish and breathable option for comfortable, long-lasting polos.



Quilted Jacquard - Our soft quilted mid-layer fabric provides warmth and insulation without adding bulk, making it ideal for layering in colder weather. Its quilted texture helps trap heat while remaining lightweight and comfortable for all-day wear.



Textured Cotton Blend - This blended cotton polyester fabric combines cotton with other fibers, offering durability, breathability, and a unique surface feel. Its blend provides softness with added texture, making it versatile for both comfort and performance.



Ultra Soft Fleece - Crafted with a blend of recycled Polyester, Viscose and Spandex fibers, this fabric offers an unparalleled level of softness that is soft to the touch and durable for everyday wear.



Matchable Polos

SAPPHIRE
MEN'S / WOMEN'S
Navy

New



SPECKLE MEN'S - PM5DL S - 3XL / **SPECKLE WOMEN'S** - PM13L XS - XXL
US \$70(A) CDN \$80(A) 100% Polyester

- Features:** (Men's/Women's)
- Moisture wicking
 - Anti-static
 - Self-fabric collar with built-in collar stay
 - High-low hem detail with side slits
 - Forward shoulder seams
 - All over print



New



SAPPHIRE MEN'S - RD55L S - 3XL / **SAPPHIRE WOMEN'S** - RD04L XS - XL
US \$70(A) CDN \$80(A) 100% Recycled Polyester

- Features:** (Men's/Women's)
- Moisture wicking
 - Self fabric collar with collar stay
 - Forward shoulder seams
 - High-low hem detail with side slits
 - All over print





WILDFLOWER
MEN'S / WOMEN'S
Ice 2 / Navy

New



Matchable Styles



Recycled Product



UPF 50+



Beach Glass/Navy

WILDFLOWER MEN'S - XE63L S - 3XL / **WILDFLOWER WOMEN'S** - XE09L XS - XXL
US \$80(A) CDN \$90(A) 92% Recycled Polyester, 8% Spandex

Features:

(Men's/Women's)

- Moisture wicking
- Anti-bacterial
- All over print

- Self-fabric collar with built-in collar stay
- High-low hem detail with side slits
- Forward shoulder seams



Pebble/Black White/Ice 2 Flame red/Navy Ice 2/Navy Beach Glass/Navy



Pebble/Black White/Ice 2 Flame red/Navy Ice 2/Navy Beach Glass/Navy



Matchable Styles



Recycled Product



UPF 50+



WHISPER MEN'S - XE69L S - 3XL / **WHISPER WOMEN'S** - XE04L XS - XXL
US \$80(A) CDN \$90(A) 92% Recycled Polyester, 8% Spandex

Features:

(Men's/Women's)

- Moisture wicking
- Anti-bacterial
- All over print

- Self-fabric collar with built-in collar stay
- High-low hem detail with side slits



Black Navy



Black Navy



OMAHA MEN'S /
BALANCE WOMEN'S
Charcoal



OMAHA MEN'S - XQ50L S - 3XL **S - 5XL** / **BALANCE WOMEN'S** - XQ00L S - XXL **S - 3XL**
US \$45(A) CDN \$55(A) 100% Recycled Polyester

Features: - Moisture wicking - High-low hem detail with side slits
(Men's/Women's) - Flat knit collar



Black Navy Charcoal White Team Royal Flame Red Cardinal



Black Navy Charcoal White Team Royal Flame Red Cardinal



ORIGINAL MEN'S - PM62L S - 3XL **S - 5XL S - XXL 4XL** / **DAYLIGHT WOMEN'S** - PM12L XS - XXL **XS - 3XL XS - XL**
 US \$55(A) CDN \$65(A) 100% Polyester

Features: (Men's)
 - Moisture wicking
 - Anti-static
 - 3-button placket
 - Bottom side slits
 - Drop tail

Features: (Women's)
 - Moisture wicking
 - Anti-static
 - Premium collar stay
 - High-low hem
 - Side slits



Black Navy Charcoal Team Royal Flame Red



Black Navy Charcoal Flame Red Team Royal



White Kelly Green Ice 2 Beach Glass Mauve Pink



White Kelly Green Ice 2 Beach Glass Mauve Pink



Lupine Violet Blue Heaven Cool Breeze



Lupine Violet Plume



PRIMARY MEN'S - PI52L S - 3XL / **RHYTHM WOMEN'S** - PI00L XS - XXL
 US \$60(A) CDN \$70(A) 100% Polyester

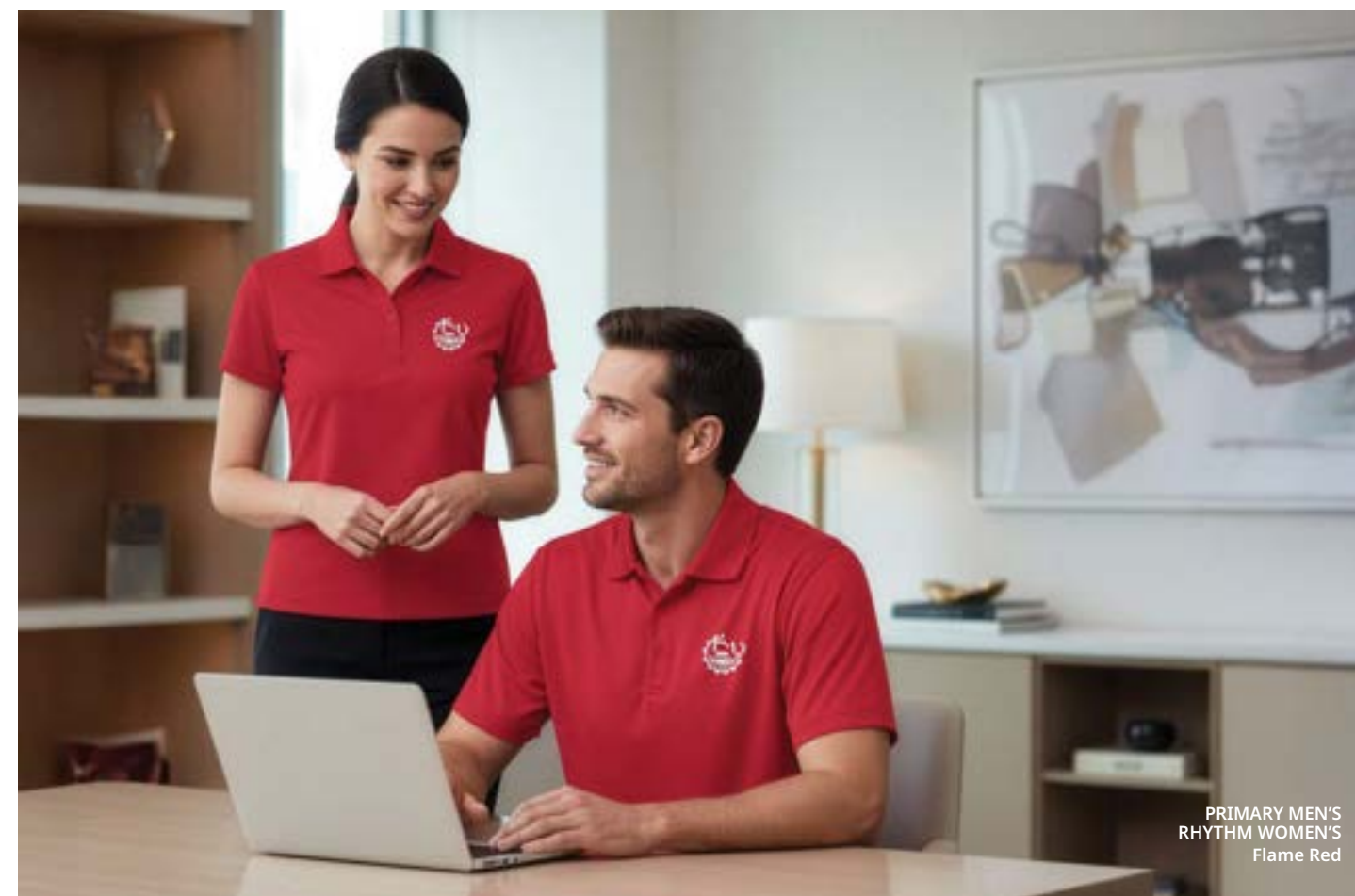
Features: (Men's/Women's)
 - Moisture Wicking
 - 3-Button placket with collar stay
 - Forward shoulder seam
 - High-low hem
 - Side slits



Black Navy Pebble Team Royal Flame Red White



Black Navy Pebble Team Royal Flame Red White



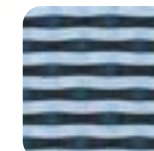
PRIMARY MEN'S
 RHYTHM WOMEN'S
 Flame Red



Men's Polos

HEATHER
Blue Heaven

New



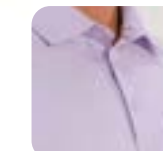
GALE - EQ50L S - XXL

US \$90(A) CDN \$100(A) 91% Polyester, 9% Spandex

- Moisture wicking
- Self fabric collar with built-in collar stay
- Forward shoulder seams
- High-low hem detail with side slits
- 3D stripe pattern



New



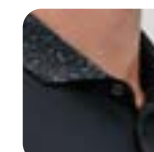
HEATHER - OH50L S - XXL

US \$90(A) CDN \$100(A) 88% Polyester, 12% Spandex

- Moisture wicking
- Contrast stretch woven collar and left chest pocket
- Hidden collar tip button detail
- Forward shoulder seams



New



BREAK - XE59L S - XXL

US \$80(A) CDN \$90(A) 92% Recycled Polyester, 8% Spandex

- Moisture wicking
- Anti-bacterial
- Forward shoulder seams
- Contrast print fabric on collar and sleeve bands
- Forward shoulder seams
- High-low hem detail with side slits



New



VICTOR - XE62L S - XXL

US \$80(A) CDN \$90(A) 92% Recycled Polyester, 8% Spandex

- Moisture wicking
- Self fabric collar with built-in collar stay
- Forward shoulder seams
- High-low hem detail with side slits
- All over print





TRAIL
Bridal Rose



MEN'S CLASSIC STRIPES MEN'S - HZ53L S - 3XL
US \$60(A) CDN \$70(A) 100% Polyester

- Moisture wicking
- Anti-static
- Self-fabric collar with built-in collar stay
- High-low hem detail with side slits
- Contrast upper body with stripe pattern



ALIGN MEN'S - BR61L S - 3XL
US \$80(A) CDN \$90(A) 91% Polyester, 9% Spandex

- Moisture wicking
- Anti-bacterial
- Self fabric collar with built-in collar stay
- Self fabric sleeve cuffs
- High-low hem detail with side slits



New



TRAIL - IA51L S - XXL
US \$80(A) CDN \$90(A) 100% Polyester

- Moisture wicking
- Jacquard fabric
- Self fabric collar with built in collar stay
- Forward shoulder seams
- High low hem detail with side slits



New



VERSA - JI50L S - XXL S - 3XL US \$70(A) CDN \$80(A)
Motion Grid - 92% Recycled Polyester, 8% Spandex

- Moisture wicking
- Anti-bacterial
- Jacquard Fabric
- Self fabric collar with built-in collar stay
- Forward shoulder seams



VENICE WOMEN'S - PM08L XS - XXL
US \$55(A) CDN \$65(A) 100% Polyester

- Moisture Wicking
- Anti-Static
- High- low hem with side slits
- Premium collar stay



VENICE WOMEN'S
Navy



Matchable Active Midlayers

HERRING
MEN'S / WOMEN'S
Pebble

New



Men's Back View

HERRING MEN'S - VX70L S - XXL / HERRING WOMEN'S - VX21L XS - XXL
US \$110(A) CDN \$120(A) 63% Polyester, 25% Nylon, 12% Spandex

- Features:** (Men's)
- Contrast - Recycled Polyester/Spandex
 - Contrast solid panel at front and back yoke
 - Quarter zip with stand-up collar
 - Forward shoulder seams
 - Self fabric sleeve cuffs

- Features:** (Women's)
- Moisture wicking
 - Herringbone jacquard self-fabric with peached face and brushed back
 - Full front zip with stand-up collar
 - Zippered front pockets
 - High-low hem detail



Navy Pebble Shadow Lime Bridal Rose



Navy Pebble Plume

New



CHAMELEON MEN'S - JU50L S - XXL / CHAMELEON WOMEN'S - JU00L XS - XXL
US \$100(A) CDN \$110(A) 98% Polyester, 2% Spandex

- Features:** (Men's)
- Moisture wicking
 - Jacquard fabric
 - Forward shoulder seams
 - Quarter-zip with stand up collar
 - Self fabric sleeve cuffs and body band

- Features:** (Women's)
- Moisture wicking
 - Jacquard self-fabric
 - Full front zip with stand-up collar
 - Zippered front pockets
 - High-low hem detail



Navy Blue Heaven White Pastel Lilac



Navy Pineneedle White



PURE MEN'S
Navy

PURE WOMEN'S
White

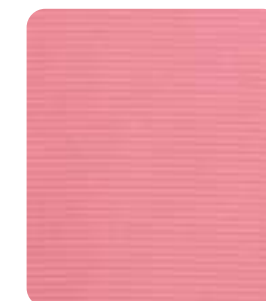
New



Matchable
Styles



Recycled
Product



Geranium Pink

PURE MEN'S - TQ70L S - XXL / **PURE WOMEN'S - TQ20L** XS - XXL

US \$100(A) CDN \$110(A) 100% Recycled Polyester

- Features:** (Men's)
- Quarter-placket with snap closure
 - Stand-up collar
 - Forward shoulder seams
 - Ribbed cuffs
 - Curved body hem

- Features:** (Women's)
- Contrast - Recycled polyester/Spandex
 - Moisture wicking
 - Anti-static
 - Full front zip with stand-up collar
 - Zippered front pockets

- Contrast solid side panels
- Thumbhole of cuffs
- High-low hem detail



Black Navy White Cool Breeze Bridal Rose



Black White Geranium Pink Plume



SPIKE
MEN'S / WOMEN'S
Black

New



SPIKE MEN'S - RG70L S - XXL / **SPIKE WOMEN'S** - RG20L XS - XXL
US \$85(A) CDN \$95(A) 100% Recycled Polyester

Features: (Men's)
- Jacquard textured fabric
- Forwarded side seam with high low hem design detail

Features: (Women's)
- Moisture wicking
- Jacquard self-fabric
- Quarter-zip with stand-up collar
- Raglan sleeves
- High-low hem detail



Black Navy Grey Stone



Black White Mauve Shadow



TAILGATE MEN'S - AQ50L S - XXL / **TAILGATE WOMEN'S** - AQ00L XS - XXL
US \$100(A) CDN \$110(A) 96% Polyester, 4% Spandex

- Features: (Men's)**
- Contrast - recycled polyester/ spandex
 - Moisture wicking
 - Textured self fabric
 - Forward shoulder seams
 - Full front zip with stand-up collar
- Features: (Women's)**
- Contrast solid side panels
 - High-low hem detail

- Features: (Men's)**
- Contrast - recycled polyester / spandex
 - Moisture wicking
 - Textured self fabric
 - Forward shoulder seams
 - Full front zip with stand-up collar
 - High-low hem detail
- Features: (Women's)**
- Contrast solid side panels
 - Full front zip with stand up collar
 - High-low hem detail



UPRIGHT MEN'S - OL50L S - 3XL S - XXL / **UPRIGHT WOMEN'S** - OL00L XS - XXL XS - XL
US \$85(A) CDN \$95(A) 70% Cotton, 25% Polyester, 5% Elastane

- Features: (Men's)**
- Quarter-zip with stand-up collar
 - Flatlock stitch throughout
 - Ribbed cuffs and body band
 - Raglan sleeves

- Features: (Women's)**
- Contrast ribbing side panels
 - Quarter-zip with stand-up collar
 - Forward shoulder seams
 - Stylized front and back shoulder yoke
 - High-low hem detail



CUSHION MEN'S - DB50L S - 3XL / **CUSHION WOMEN'S** - DBOOL XS - XXL XS - XL
US \$90(A) CDN \$100(A) Cushion Fabric - 100% Polyester

- Features: (Men's)**
- Contrast fabric at collar, side panels, underarm, cuffs and body band - Recycled Polyester/Spandex
 - Quarter-zip with stand-up collar
 - Moisture wicking
 - Anti-pilling
 - Anti-static
 - Jacquard fabric

- Features: (Women's)**
- Contrast fabric at collar, side panels, underarm, cuffs and body band - Recycled Polyester/Spandex
 - Quarter-zip with stand-up collar
 - Anti-pilling
 - Anti-static
 - Jacquard fabric
 - Thumbhole on cuffs





POWER MEN'S - XT79L S - 3XL / **POWER WOMEN'S** - XT14L XS - XL XS - XXL
US \$90(A) CDN \$100(A) 91% Recycled Polyester, 9% Spandex

- Features: (Men's)**
- Moisture wicking
 - Anti-static
 - Ribbing on collar back
 - Raglan sleeves
 - Quarter-zip with stand-up collar
 - Contrast textured stripes on shoulder panels
 - Decorative stitching details along seams

- Features: (Women's)**
- Moisture wicking
 - Anti-static
 - Anti-pilling
 - High-low hem detail
 - Quarter-zip with stand-up collar
 - Contrast textured stripes on shoulder panels and upper sleeve panels



THEORY MEN'S - JL55L S-3XL / **KINETIC WOMEN'S** - JL07L XS - XXL XS - XL
US \$85(A) CDN \$95(A) 88% Polyester, 12% Spandex

- Features: (Men's)**
- Peach hand-feel
 - Moisture wicking
 - Anti-pilling
 - Anti-static
 - Contrast mesh fabric
 - Stylized Pipping

- Features: (Women's)**
- Peach hand-feel
 - Moisture wicking
 - Anti-pilling
 - Anti-static
 - Stylized Pipping
 - Raglan shoulder panel



CALIBRE MEN'S - XT53L S - 3XL S - 5XL S - 4XL / **ESSENCE WOMEN'S** - XT07L S - XXL S - 3XL
US \$85(A) CDN \$95(A) 88% Recycled Polyester, 12% Spandex

- Features: (Men's)**
- Quarter zip pullover
 - Mock neck with a durable vislon zipper
 - Raglan sleeve for less restrictive movement
 - Brushed interior for comfortable feel
 - Banded cuffs for a better fit
 - Underarms perforated venting holes for breathability
 - Engineered side panels

- Features: (Women's)**
- Lightweight 1/4 zip pullover
 - Perforated underarms for breathability
 - Drop tail hem for added coverage
 - Reflective back strip for safety
 - Moisture wicking finish
 - Anti-static
 - Hidden pocket for storage



DIMENSION MEN'S - XT74L S - 3XL / **IMPRESSION WOMEN'S** - XT09L XS - XXL
US \$75(A) CDN \$85(A) 91% Recycled Polyester, 9% Spandex

- Features: (Men's/ Women's)**
- Moisture wicking
 - Anti-static
 - Long sleeve hoody
 - Hoody
 - Crossed front opening
 - Raglan sleeve for better range of motion
 - Self-fabric sleeve cuff





CLASSIC STRIPES MEN'S - HZ54L S - 3XL / **CLASSIC STRIPES WOMEN'S** - HZ00L XS - XXL
US \$65(A) CDN \$75(A) 100% Polyester

- Features:** (Men's)
- Moisture wicking
 - Anti-static
 - Raglan sleeves
 - Quarter-zip with stand-up collar
 - Contrast upper body with stripe pattern

- Features:** (Women's)
- Moisture wicking
 - Anti-static fabric
 - Raglan sleeves
 - Quarter-zip with stand-up collar
 - Contrast upper body with stripe pattern
 - High-low hem detail with side slits



COMMUTER MEN'S - IS56L S - 3XL S - XXL / **KEEPSAKE WOMEN'S** - IS21L XS - XXL
US \$65(A) CDN \$75(A) 100% Polyester

- Features:** (Men's)
- Collar stand
 - Forward shoulder seam
 - Reverse coil quarter zip
 - Two-tone color-block
 - Self banded cuff and hem

- Features:** (Women's)
- Mock neck
 - Contrast paneling
 - Reverse coil
 - Quarter zip
 - Banded sleeve cuff



ALEC MEN'S - JL57L S - 3XL / **ALYSSA WOMEN'S** - JL01L XS - XXL
US \$95(A) CDN \$105(A) 88% Polyester, 12% Spandex

- Features:** (Men's)
- Peached handfeel
 - Moisture wicking
 - Anti-static
 - Anti-pilling
 - Contrast mesh panels at under arm and under sleeve panels
 - Self-fabric sleeve cuffs and body band

- Features:** (Women's)
- Inner arm ventilation
 - Front pockets
 - Mock Neck
 - Raglan sleeves for better range of motion
 - Thumb holes
 - Drop tail



FORM MEN'S - XT76L S - 3XL S - 5XL / **MESA WOMEN'S** - XT13L XS - XXL XS - 3XL
US \$100(A) CDN \$110(A) FORM: 91% Polyester, 9% Spandex / MESA: 91% Recycled Polyester, 9% Spandex

- Features:** (Men's)
- Moisture wicking
 - Anti-static
 - Front Pockets
 - Two-needle stitch detail
 - Self-fabric cuff
 - Center front zip

- Features:** (Women's)
- Moisture wicking
 - Anti-static
 - Full front zip with stand-up collar
 - Stylized wrapover side panels
 - Zippered front pockets with mesh pocket bags





Men's Active Midlayers

DIRECT VEST
Blue Heaven

New



RELOAD PULLOVER - DX72L S - XXL

- US \$90(A) CDN \$100(A) 55% Cotton, 42% Polyester, 3% Spandex
- Contrast solid sleeves -Recycled polyester/Spandex
 - Moisture wicking
 - Anti-static
 - Quarter-zip with stand-up collar
 - Forward shoulder seams



Black Navy Blue Heaven White



HERON - IS59L S - 3XL

- US \$55(A) CDN \$65(A) 100% Polyester
- Moisture wicking
 - 1/4 Zipperd front zip
 - Forward Shoulder Seams



Black Navy Pebble Team Royal Flame Red White Ice 2 Kelly Green

New



DIRECT VEST - LN56L S - XXL

- US \$75(A) CDN \$85(A) 92% Polyester, 8% Spandex

- Moisture wicking
- Contrast color at inner collar and inner back yoke
- Quarter zip with stand-up collar
- Forward shoulder seams
- Self fabric body band



Black Navy Blue Heaven White



Matchable Outerwear

RELOAD FULL ZIP
MEN'S/WOMEN'S
Navy

New



RELOAD FULL ZIP MEN'S - DX71L S - XXL / RELOAD FULL ZIP WOMEN'S - DX20L XS - XXL

US \$100(A) CDN \$110(A) 55% Cotton, 42% Polyester, 3% Spandex Contrast - Recycled Polyester/Spandex

Features:
(Men's)

- Moisture wicking
- Anti-static
- Front jacquard panel
- Contrast solid panel at collar, sleeves, and back body

- Forward shoulder seams
- Full front zip with stand-up collar
- Coverstitches on sleeve and body hem

Features:
(Women's)

- Moisture wicking
- Anti-static
- Jacquard front body with contrast solid collar, sleeves, and back panel

- Full front zip with stand-up collar
- Zippered front pockets
- High-low hem detail



Black Navy



Black Navy White



GRADATION MEN'S - QS52L S - 3XL / GRADATION WOMEN'S - QS21L XS - XXL

US \$165(A) CDN \$195(A) Shell: 100% Nylon Contrast: 95% Polyester, 5% Spandex Lining: 100% Polyester

Features:
(Men's)

- Fill - polyester
- Water repellent coating
- Forward shoulder seams
- Full front zip with stand-up collar
- Zippered front pockets

- Contrast solid side and underarm panels
- Cross hatch quilting on body
- Elasticated cuffs

Features:
(Women's)

- Fill - polyester
- Water repellent coating
- Forward shoulder seams
- Full front zip with stand-up collar
- Zippered front pockets

- Cross hatch quilting on body
- High-low hem detail
- Contrast solid side and underarm panels



Black Navy



Black Navy White



EXPLORER
MEN'S / WOMEN'S
Black



EXPLORER MEN'S - XT80L S - 3XL / **EXPLORER WOMEN'S** - XT15L XS - XXL
US \$125(A) CDN \$135(A) 91% Recycled Polyester, 9% Spandex

- Features: (Men's)**
- Polyester fill jacket
 - Moisture wicking
 - Anti-static
 - Anti-pilling
 - Quilted contrast front panels
 - Two-way front zip with stand-up collar
 - Zippered front pockets
 - Bungee cord adjustable hem
 - Raglan sleeves

- Features: (Women's)**
- Polyester fill
 - Moisture wicking
 - Anti-static
 - Anti-pilling
 - Quilted contrast front panels
 - Full front zip with stand-up collar
 - Zippered front pockets
 - Thumbhole on cuffs
 - High-low hem detail



Black Navy



Black Navy White



DRIVEN MEN'S - FC55L S - 3XL / **DRIVEN WOMEN'S** - FC02L XS - XXL
US \$105(A) CDN \$115(A) 100% Polyester

- Features: (Men's)**
- Water repellent
 - Two-way front zip with stand-up collar
 - Zippered front pockets
 - Elbow darts
 - Adjustable cuffs with velcro tabs

- Features: (Women's)**
- Water repellent
 - Two-way front zip with stand-up collar
 - Zippered front pockets
 - Contrast jersey cuffs with thumbholes
 - High-low hem detail



Black Navy Pebble



Black Navy Pebble



CONTROL MEN'S - WP52L S - 5XL S - 4XL S - 3XL / **CONTROL WOMEN'S** - WP20L XS - XXL XS - 3XL
US \$140(A) CDN \$155(A) 100% Polyester

- Features:** (Men's)
- Polyester fill
 - Water repellent
 - Light weight jacket
 - Quilted woven with insulation on chest
 - 2-way vislon zipper
 - Secured zip pockets
 - Articulated sleeves
 - Adjustable cuff

- Features:** (Women's)
- Polyester fill
 - Water repellent
 - Lightweight
 - Quilted woven with insulation on chest
 - 2-way vislon zipper
 - Secured zip pockets
 - Articulated sleeves
 - Inner storm cuff



FLIGHT MEN'S - WP53L S - 3XL / **FLIGHT WOMEN'S** - WP21L XS - XXL
US \$105(A) CDN \$115(A) 100% Polyester

- Features:** (Men's/Women's)
- Polyester fill
 - Water repellent
 - Light weight vest
 - Quilted woven with insulation on chest
 - 2-way vislon zipper
 - Secured zip pockets



HARRINGTON MEN'S - WB53L S - XXL / **BEVEL WOMEN'S** - WB07L XS - XL
US \$125(A) CDN \$135(A) 90% Polyester, 10% Spandex

- Features:** (Men's)
- Collar stand
 - Full zip front
 - Contrast side & underarm panels
 - Hidden underarm vents
 - Zippered pockets

- Features:** (Women's)
- Collar stand
 - Full zip front
 - Contrast side & underarm panels
 - Hidden underarm vents
 - Zippered pockets
 - Side hem curved slits



FIRSLITE MEN'S - WB51L S - 3XL S - XXL / **ZARA WOMEN'S** - WB04L XS - 2XL XS - XL
US \$90(A) CDN \$100(A) 90% Polyester, 10% Spandex

- Features:** (Men's)
- 2-way zipper
 - Water repellent finish
 - Forwarded shoulder & side seam for better fit
 - Full zip vest
 - Zippered side pockets
 - Drawstring adjustable bottom hem

- Features:** (Women's)
- Water repellent
 - Zippered pockets
 - Drop tail
 - Lightweight
 - Full zip vest





Men's Casual

SPORTSMAN HOODIE MEN'S
Blue Heaven

New



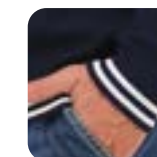
ELEVATE TEE - OC50L S - 3XL

US \$30(A) CDN \$35(A) 55% Organic Cotton, 45% Modal

- Set-in sleeves
- Ribbed crew neck
- Forward shoulder seam



New



SPORTSMAN HOODIE - KY54L S - 3XL

US \$90(A) CDN \$100(A) 100% Cotton

- Fully Fashion finishing
- Varsity stripe rib knit on hood opening, body band and sleeve cuffs



New



SPORTSMAN POLO - XC50L S - 3XL

US \$90(A) CDN \$100(A) 80% Cotton, 20% Recycled Polyester

- Polo style collar
- Oversized drop shoulder silhouette
- Front inseam pocket
- Varsity stripe ribbing at body band and sleeve cuffs



New



SPORTSMAN 1/4 ZIP - XC70L S - 3XL

US \$90(A) CDN \$100(A) 80% Cotton, 20% Recycled Polyester

- Quarter-zip with stand-up collar
- Forward shoulder seams
- Ribber collar, cuffs and body band with contrast stripes





Matchable Casuals

PODIUM MEN'S
Team Royal
ADORN WOMEN'S
Team Royal

Core Items
Matchable Styles



PODIUM MEN'S - RC74L S - XXL S - 3XL S - 4XL / **ADORN WOMEN'S** - RC07L XS - XXL XS - XL
US \$70(A) CDN \$80(A) 80% Cotton, 20% Polyester

Features:
(Men's/Women's)

- 3 Panel hood
- Kangaroo pocket
- Draw cords with plastic tipped ends
- Ribbed bottom hem and sleeve cuffs
- Soft brushed interior



Black Navy Heather Pebble Grey Stone White Team Royal



Black Navy Heather Pebble Grey Stone White



Flame Red Sand Lupine Skipper Blue Brown Cardinal



Team Royal Flame Red Sand Lupine Fusion Coral



Delta Green Forest Green Ice 2 Purple Orange Gold



Evening Haze Fairy Tale



YVETTE CREWNECK
WOMEN'S
Black



ZANE MEN'S - RC52L S - 3XL / **YVETTE CREWNECK WOMEN'S - RC16L** XS - XXL
US \$65(A) CDN \$75(A) 60% Cotton, 40% Polyester

Features: (Men's)
 - Forwarded shoulder seam
 - Engineered side seam
 - Ribbed collar, bottom hem and sleeve cuffs

Features: (Women's)
 - Ribbed collar, cuffs and body band



Black Navy Heather Pebble White Team Royal Flame Red Cardinal Ice 2 Delta Green Brown Purple Orange Gold



Black Pebble Heather Pebble White Mauve Shadow Fairy Tale



PODIUM FULL ZIP
MEN'S
Sand



OSCAR MEN'S - NT57L S - 3XL / ISLAND WOMEN'S - NT15L XS - XXL
Men's - US \$30(A) CDN \$35(A) Women's - US \$30(A) CDN \$35(A) 65% Polyester, 35% Cotton

- Features:** (Men's/Women's)
- Jersey knit fabric
 - Mechanical stretch
 - Premium Soft hand feel
 - Lightweight
 - Heather effect and solid colourways
 - Self fabric neckband



PODIUM FULL ZIP - RC68L XS - 4XL XS - 3XL
US \$80(A) CDN \$90(A) 80% Cotton, 20% Polyester

- Forward shoulder seams
- Full front zip with attached hood
- Drawcord adjustable hood
- Double front kanga pockets
- Ribbed body band and sleeve cuffs





RICHMOND MEN'S - NT60L S - XXL S - 4XL S - 3XL / **MADDOX WOMEN'S** - NT18L XS - XXL XS - XL
 US \$25(A) CDN \$27(A) 65% Polyester, 35% Cotton

- Features:** (Men's/Women's)
- Jersey knit fabric
 - Mechanical stretch
 - Heather effect and solid colourways
 - Premium Soft hand feel
 - Lightweight
 - Self fabric neckband



RELAY MEN'S - NT63L S - XXL S - 3XL S - 4XL / **RELAY WOMEN'S** - NT23L XS - XXL XS - XL S - 3XL
 US \$45(A) CDN \$50(A) 65% Polyester, 35% Cotton

- Features:** (Men's/Women's)
- Crossed collar line
 - Engineered shoulder seam
 - 3D cut sleeves
 - Band finishing bottom hem and sleeve cuff
 - Kangaroo pocket





LUXE

COLLECTION

LUXE SIGNATURE BOMBER ON MEN'S Candied Ginger

LUXE SIGNATURE STEIN ON WOMEN'S Vintage Rose

New



LUXE SIGNATURE KNIT LS - AU51L XS - XXL
US \$55(A) CDN \$60(A) 55% Cotton, 45% Recycled Polyester

- Moisture wicking
- Anti-pilling
- Anti-static
- Drop shoulder boxy silhouette
- Ribbed neck trim and sleeve cuffs



Black Navy White Candied Ginger Vintage Rose

New



LUXE SIGNATURE STEIN - US06L XS - XXL
US \$110(A) CDN \$120(A) Ultra Soft Fleece - 50% Recycled Polyester, 43% Viscose, 7% Spandex

- Half-zip placket collar with a snap closure
- Oversized drop shoulder silhouette
- Ribbed body band and sleeve cuffs



Black Navy Grey Stone Candied Ginger Vintage Rose

New



LUXE SIGNATURE BOMBER - US07L XS - XXL
US \$140(A) CDN \$155(A) Ultra Soft Fleece - 50% Recycled Polyester, 43% Viscose, 7% Spandex

- Oversized drop shoulder silhouette
- Snap closure
- Weltd side pockets
- Ribbed neck trim, body band and sleeve cuffs



Black Navy Candied Ginger



LUXE SIGNATURE CREW - US00L XS - XXL
US \$100(A) CDN \$110(A) Ultra Soft Fleece - 50% Recycled Polyester, 43% Viscose, 7% Spandex

- Oversized drop shoulder silhouette
- Self-fabric neck trim
- Inseam pockets
- Ribbed body band and sleeve cuffs



Black Navy Grey Stone Candied Ginger Vintage Rose

Verve
by LEVELWEAR



JUDD FULL ZIP
Candied Ginger

New



VERVE JUDD FULL ZIP - XC20L XS - XXL

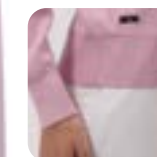
US \$80(A) CDN 90(A) 80% Cotton, 20% Recycled Polyester

- Ribbed collar, cuffs, and hem
- Raglan sleeves
- Two-way front zip with lined hood
- In-seam front pockets



Black White Candied Ginger Delphinium

New



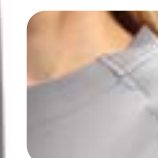
VERVE VERTEX FULL ZIP - VJ20L XS - XXL

US \$125(A) CDN \$135(A) 55% Cotton, 30% Viscose, 15% Nylon

- Milano stitch throughout with ribbed band on cuffs, hem, and hood opening
- Drop shoulder sleeve with forward shoulder seam



Black White Tan Fragrant Lilac



VERVE SLENDER - EH03L XS - XL **XS - XXL**

US \$65(A) CDN \$75(A) 90% Recycled Polyester, 10% Spandex

- Moisture wicking
- Ribbed back collar trim
- Raglan sleeves
- Center front neck line clean finish detail
- Self fabric sleeve cuffs



Black Gull White Ice 2



VERVE SPONGE CREW - US03L XS - XL

US \$90(A) CDN \$100(A) Ultra Soft Fleece - 50% Recycled Polyester, 43% Viscose, 7% Spandex

- Drop shoulder and cropped body silhouette
- Self fabric neck, body band and sleeve cuffs



Black Gull White Candied Ginger Delphinium



Headwear

MANCHESTER
Navy

New



MANCHESTER - 01CDL US \$22(A) CDN \$27(A) 100% Polyester (Corduroy)

Sizes: One size fits most
Category: Snapback
Treatment: Leather Patch

Features: - 6-panel Construction - Low Profile
 - Moisture wicking sweatband
 - Snapback closure



Black Navy Sand

New



AIRSTREAM - 01F3L US \$29(A) CDN \$35(A) 95% Recycled Polyester, 5% Spandex

Sizes: S / L
Category: Stretch Fit
Treatment: HDL Patch

Features: - 6 Panel construction - Levelwear branded elastic sweatband
 - Stretch fit fullback
 - Laser cut perforations in the front two panels



Black Navy Pebble White

New



PREMIER - 01E8L US \$24(A) CDN \$30(A) 95% Polyester, 5% Spandex

- Sizes:** One size fits most
Category: Snapback
Treatment: HDL Reflective Patch
- Features:** - 6 Panel Construction - Memory shape brim
 - Mid profile
 - Moisture wicking sweatband
 - Levelwear embossed closure



BARELY THERE - HCLML US \$17(A) CDN \$22(A) 100% Lightweight Cotton

- Sizes:** One size fits most
Category: Core Adjustable
Treatment: Chenille Patch
- Features:** - Belted snap closure - One size fits most
 - 6-Panel Construction
 - Low profile unstructured



ECO-LITE - HCG3L US \$20(A) CDN \$25(A) 95% Recycled Polyester, 5% Spandex

- Sizes:** One size fits most
Category: Core Adjustable
Treatment: Embroidered Flock Patch
- Features:** - 6-panel Construction - Low Profile
 - Moisture wicking sweatband
 - Lightweight velcro closure



CREST POLY - HCD5L US \$17(A) CDN \$22(A) 100% Polyester

- Sizes:** One size fits most
Category: Core Adjustable
Treatment: Metallic Insignia
- Features:** - Lightweight - Adjustable Velcro closure
 - Low Profile - 6 Panel construction
 - Non-structured





MATRIX - HCA9L US \$20(A) CDN \$25(A) 95% Polyester, 5% Spandex

Sizes: One size fits most
Category: Tech Adjustable
Treatment: Embroidery

Features: - Lightweight - Elastic Velcro closure
 - Diamond polyester - Low profile
 - 6 panel construction



ZEPHYR - HC77L US \$22(A) CDN \$27(A) 100% Polyester

Sizes: One size fits most
Category: Tech Adjustable
Treatment: Etched Suede Transfer

Features: - Structured mid-profile - 6 Panel construction
 - Adjustable Velcro closure - Lightweight breathable fabric
 - Moisture wicking sweatband



RADAR - HC95L US \$22(A) CDN \$27(A) 60% Polyester, 39% Cotton, 1% Spandex

Sizes: One size fits most
Category: Snapback
Treatment: Embroidery

Features: - Structured mid-profile - 6-panel construction
 - Poly/Spandex Mesh for added Comfort
 - Adjustable Snap Back Closure



LEGEND - HCE6L US \$24(A) CDN \$30(A) 94% Polyester, 6% Spandex

Sizes: One size fits most
Category: Tech Adjustable
Treatment: Tackle Twill Patch

Features: - 6 Panel construction - Stretch knit fabric
 - Mid-profile - Lightweight Velcro closure
 - Moisture wicking sweatband





MALIBU - HCF1L US \$26(A) CDN \$32(A) 95% Polyester, 5% Spandex

- | | | | | |
|-------------------|--------------------|------------------|------------------------------|------------------------------|
| Sizes: | One size fits most | Features: | - 6 Panel Construction | - Mid-profile |
| Category: | Tech Adjustable | | - Horizontal front seam | - Moisture wicking sweatband |
| Treatment: | Woven Stitch Patch | | - Multi-colored braided rope | - Snapback closure |
| | | | - Laser cut perforations | |



Black Navy Pebble White Blue Heron Overcast Eucalyptus



ASCEND - HCB8L US \$26(A) CDN \$32(A) 95% Polyester, 5% Spandex

- | | | | | |
|-------------------|-------------------------------|------------------|---|------------------------------|
| Sizes: | One size fits most | Features: | - 6 panel construction | - Elastic velcro closure |
| Category: | Tech Adjustable | | - Mid profile | - Moisture wicking sweatband |
| Treatment: | 3D Embroidery / HDL Backstrap | | - Laser cut perforations in back 4 panels | |



Black Navy Dark Grey Silver White Dk Green Olive Light Blue



ZETA - HC97L US \$29(A) CDN \$35(A) 95% Polyester, 5% Spandex

Sizes: S/M, L/XL
Category: Stretch Fit
Treatment: Embroidery

Features: - Laser cut perforations - Structured Mid Profile
 - 6 Panel Construction with welded front seam for cleaner finish - Reflective branding



CANOPY - HC96L US \$34(A) CDN \$38(A) 100% Polyester

Sizes: One Size Fits Most
Category: Sun Protection
Treatment: Embroidery

Features: - Lightweight Unstructured
 - Adjustable Drawcord



TOUR TOWEL - TWL1L US \$30(A) CDN \$32(A)
 80% Polyester, 20% Polyamide



Features: Waffle weave textured towel
Sizes: 20" X 40"

PLAYERS TOWEL - TWL2L US \$20(A) CDN \$24(A)
 80% Polyester, 20% Polyamide



Features: Waffle weave textured towel
Sizes: 16" x 24"



Signature Applications

Levelwear Placket Branding™

Express Your Unique Story with Understated Style

Our trademarked Placket Branding is an exclusive Levelwear touch, designed to bring a subtle yet powerful edge to corporate apparel. With custom color pops and logo details, each piece is a quiet nod to your brand's uniqueness - a reminder that, like every stitch and accent we add, all the little details matter. Levelwear Placket Branding turns every garment into a refined expression of your corporate identity, letting your message shine through in a way that's both understated and memorable.



HDLP/HDLM HDL Placket



PWTR PWT Reflective

Custom Hoodliner

Make It Your Own

Our Custom Hoodliner treatment adds an impactful new dimension to our premium hoodies, offering a unique way to showcase your brand's dynamic personality. Drawing upon elements from your corporate style guide, we match colors, add logos, and weave in messaging that creates a connection. Whether you choose a subtle tonal approach or a bold color pop, each Hoodliner is crafted to reflect your brand's identity, leaving a lasting impression on the wearer, and catching the eye of everyone who sees it.



HDLN Hood Lining



PWTN Digital Screen
Inside hood (Relay)

Apparel Treatment Summary

Embroidery / Dimensional Embroidery



EMBS Embroidery



EMBD Embroidered 3D patch



EMGS Glow-in-the Dark Embroidery



EFSB/EFLB Felt applique bean



EFSS/EFLS Felt applique satin



EMGD Glow-in-the Dark 3DEmbroidery

Print and Transfer



DSAA Digital Screen print



SCRP Screen print



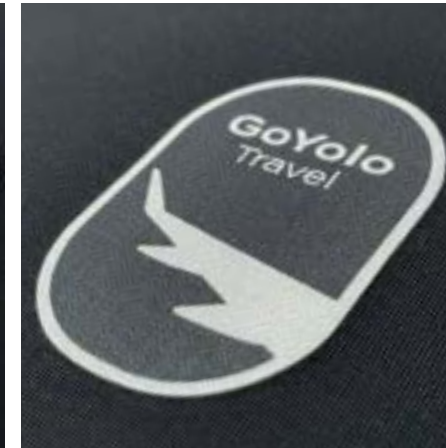
FLDS/FLDL Flocklite DM

Headwear Treatment Summary

Labels and Patches



HDLS HDL Satin label



HDLW HDL Woven label



HDLT HDL Tab

Headwear only



HDLQ HDL Patch



HDLR HDL Reflective



EFLP Embroidered Felt Patch



HDLE HDL with Merrowed Edge



HDLC HDL Backstrap



PWTS Backstrap / Brim

Corporate Offshore Treatment Summary



CHES Chenille patch



PTCK Embroidered flock patch



PTCD Embroidered 3D patch



PTWL Embroidered Patch with label



FLTS Flocklite small



PZAA/PZAM Insignia / Metallic insignia



LEAA Leather patch (Headwear only)



PUFS Puffed patch



RRAA Raised Rubber



SDTA Etched Suede Transfer



SILD Raised Silicone patch



WPAA Woven Stitched patch



Fitting Chart

Men's Apparel							
Size	S	M	L	XL	XXL	XXXL	XXXXL
Chest	34 - 36	38 - 40	42 - 44	46 - 48	50 - 52	54 - 56	58 - 60
Waist	28 - 30	31 - 34	35 - 38	40 - 42	43 - 45	47 - 49	51 - 53

Women's Apparel						
Size	XS	S	M	L	XL	XXL
Chest	32 - 33	34 - 35	36 - 37	39 - 40	42 - 43	45 - 48
Waist	23 - 25	26 - 28	29 - 31	32 - 34	35 - 37	38 - 40
Hip	33 - 34	35 - 37	38 - 40	41 - 43	44 - 46	47 - 49

Chest - Measure the fullest circumference around the body below the underarm

Waist - Measure the narrowest circumference around the body

Hips - Measure the fullest circumference around the body while standing with feet together

* All the measurements are in inches

* Dimensions refer to body measurements, not garment measurements

Terms & Conditions

SHIPPING - All orders are subject to shipping and handling charges.

U.S. Orders: F.O.B. Buffalo, NY

Canadian Orders: F.O.B. Richmond Hill, ON

CREDIT TERMS - Standard terms are Net 30 on approved credit.

ARTWORK APPROVALS - Artwork sell sheets/proofs are provided for every new order. Re-orders or existing logos will be sent for approval on customer request. Please ensure all details are thoroughly checked before approving artwork.

DAMAGES, RETURNS AND CREDITS - Only items that were shipped incorrectly or that are damaged or defective will qualify for return. Items returned must have a Return Authorization Number and the RA # must be included on all cartons shipped back for credit. This may be obtained through any customer service representative and must include a valid reason for returning.

COLOR SHADES/COLORFAST - While Levelwear makes the effort to maintain consistency across colors, reasonable variances can be expected from dye lot to dye lot. The color shades of washed, distressed, brushed or vintage fabrics and applications can have variances within the same dye lot. Although all of our products are colorfast, dye will eventually fade when continually exposed to the sun.

RIGHT TO PROMOTE - Levelwear reserves the right to use all decorated products in our catalogs, website, advertising, and displays, unless otherwise specified in writing at the time of the order.

LICENSED LOGOS - Levelwear ensures all garments shipped to a customer will have appropriate licensing approval, royalty payments, contracts, guarantees, etc., met prior to shipping. All decorated orders using licensed logos become the sole responsibility of the invoiced customer, specifically pertaining to altering garments by the customer after receiving. Levelwear strictly mandates that no additional decorating of licensed product be done after receiving.

*All logos shown in this catalog are property of their respective organizations and are for illustration purposes only.

LEVELWEAR



WHO'S
WITH
YOU?™